



## Using TOP for Remote Judging

TOP is used for club judging when connected to the external Judging Control Units but may also be used by a single judge for remote judging without the use of an attached Judging Control Unit.

This remote judging interface was specifically designed for fast and easy judging of a set of photos, and even includes an interface to type comments when it is used for remote club judging.

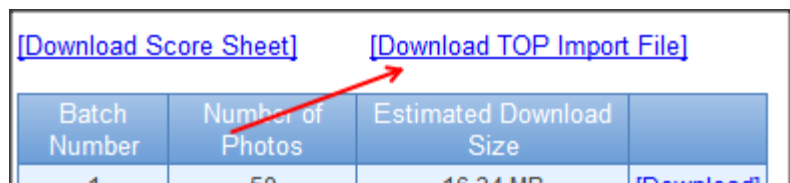
The specific enhancements to allow remote judging are:

- Use the TOP software without the TOP judging score unit.
- Use a custom score sheet that does not include the photographer's details.
- When using a TOP judging score unit (if you have a judging control unit in your possession), allow it to also to control the navigation through the photos without any need for using the keyboard.

## A Remote Judging session

### Requirements

1. Download the latest version of the TOP judging software from the PhotovaultOnline.com website. The URL is:  
<http://www.photovaultonline.com/photovault/index.php?r=site/theotherproject>
2. Install the software (Note: The current version only support the Microsoft Windows operating system, it will not work in the Apple Mac operating system). The installation will create a shortcut on the desktop.
3. Download the Remote Judging Configuration files (TOP Remote Judging Configuration.zip) from the same web page. Unzip the file in a folder of your choice. The zip file contains a file called "TOP Remote Judging (Score out of 15) – One Judge.cfg". When judging is done for a specific club event, ask the club contact person to send you a version of their club TOP configuration that will then automatically assign the awards as judge score the photo.
4. If you received a link to download the photos from PhotovaultOnline.com, also download the TOP Import File.
5. If you've received a CD with the photos from the Salon Director, the Salon Director most likely included the TOP Import File on the CD.

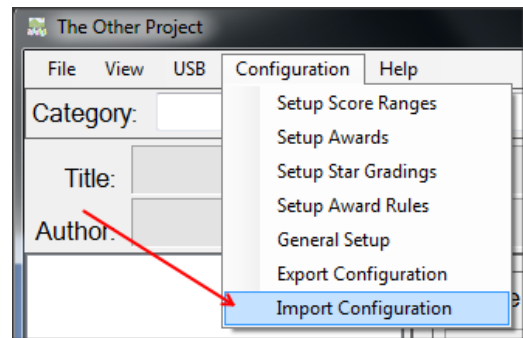
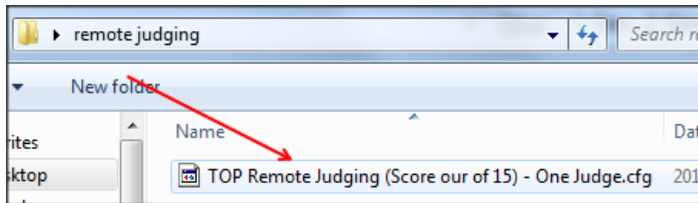


<a href="#">[Download Score Sheet]</a>		<a href="#">[Download TOP Import File]</a>	
Batch Number	Number of Photos	Estimated Download Size	
1	50	16.24 MB	<a href="#">[Download]</a>

### Configure TOP for Remote Judging

1. Open TOP using the shortcut on your desktop (The Other Project).
2. Click on the "Configuration" menu and select "Import Configuration". **Important Note:** If you are using the same PC for club judging, then first save the current configuration using the "Export Configuration" option from the same menu.

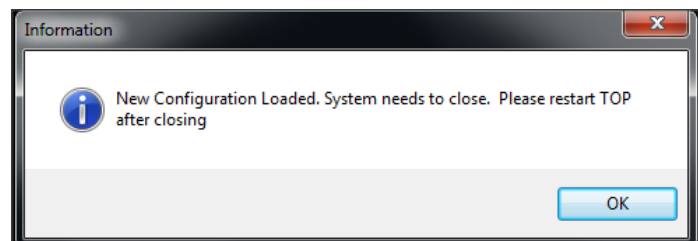
3. Browse to the folder where you've unzipped the "TOP Remote Judging Configuration.zip" file, and select the configuration file for scoring out of 15.
4. You will receive a warning that this action will override your current configuration. If you did



not save your configuration as noted in the previous point and you want to first save the

current configuration, click the "No" button and first save the current configuration.

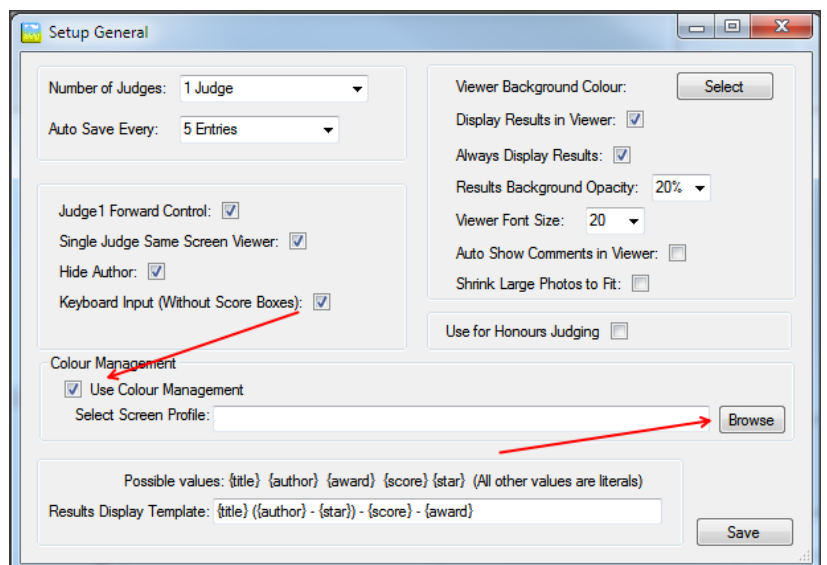
5. Once the new configuration is imported, the software needs to be restarted for the changes to take effect. Once you've clicked on the "OK" button, the software will automatically terminate. Start it again using the shortcut on the desktop.



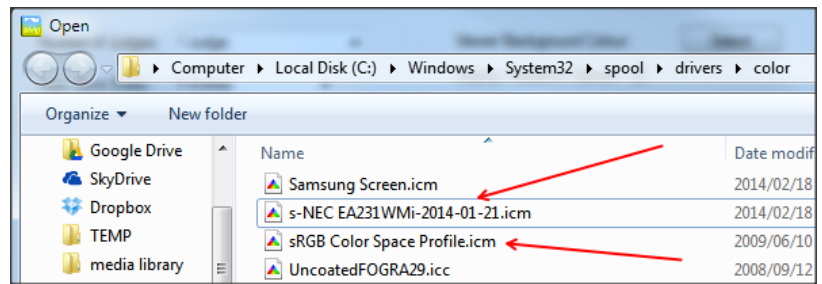
## Setting up Colour Management

It is very important that you setup TOP to be in line with your current Desktop Colour Management to ensure that photos is displayed at its best.

1. Open General Setup from the Configuration menu.
2. Enable colour management and then click on the "Browse" button to select the screen profile.
3. TOP will by default open the default windows folder where colour profiles are stored. (Note that a colour meter such as the Datacolor Spyder will also store the custom calibrated screen profiles in this folder.)



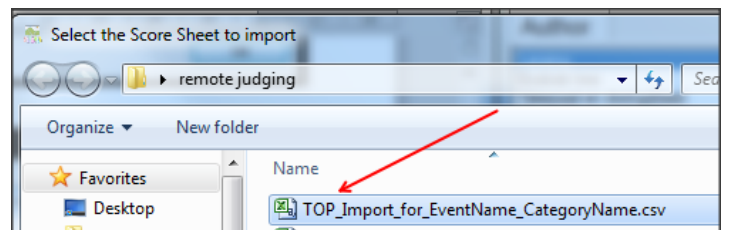
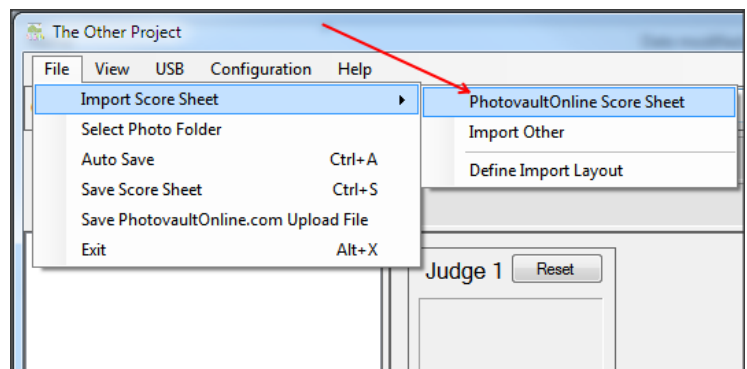
4. Select the profile of your last good calibration or if your screen is not calibrated with a Spyder or equivalent coloury meter then select the standard Windows sRGB profile.



## Starting a judging session

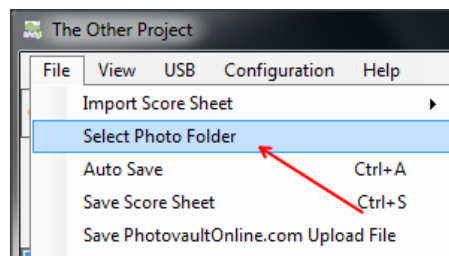
This section explains how to start a session based on the TOP import file downloaded as explained in a previous section.

1. Click on the File Menu and select "Import Score Sheet" and then click on the "PhotovaultOnline Score Sheet".
2. Select the TOP import file you've downloaded (or received on the CD) for the category you want to judge. A typical Import file will start with the words "TOP Import for" and will also contain the name of the event and the name of the category. The example to the right uses the generic words "EventName" and "CategoryName".

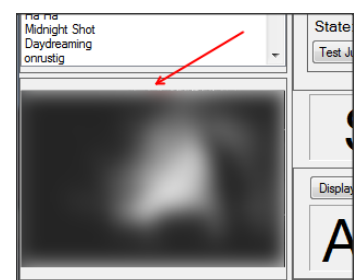
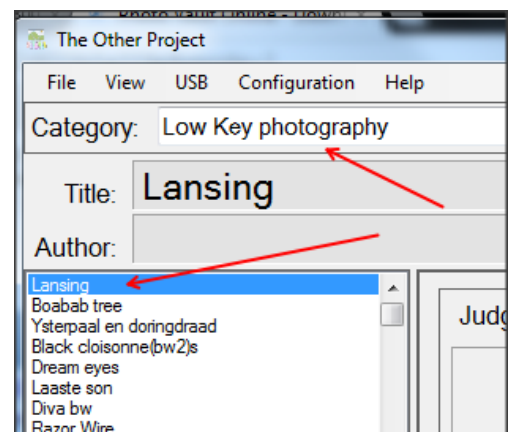


3. Once imported, the name of the category will be displayed in the category dropdown control and the listbox control will contain all the photo titles. To the right it will also display the number of photos in this category.
4. Next select the folder containing the photos: From the "File" menu, click on the "Select Photo Folder" option. Browse to the folder containing the photos.

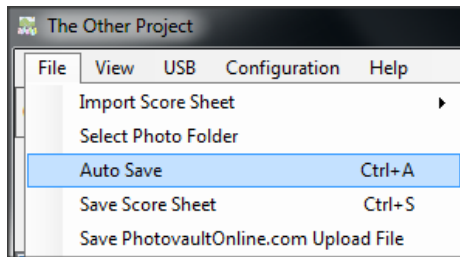
1  
of  
522



As soon as the photo folder is selected, the currently highlighted photo (in this case "Lansing") will be displayed in the thumbnail viewer below the list of photo titles. This is a visual confirmation that you've successfully selected the correct import file and photo folder.

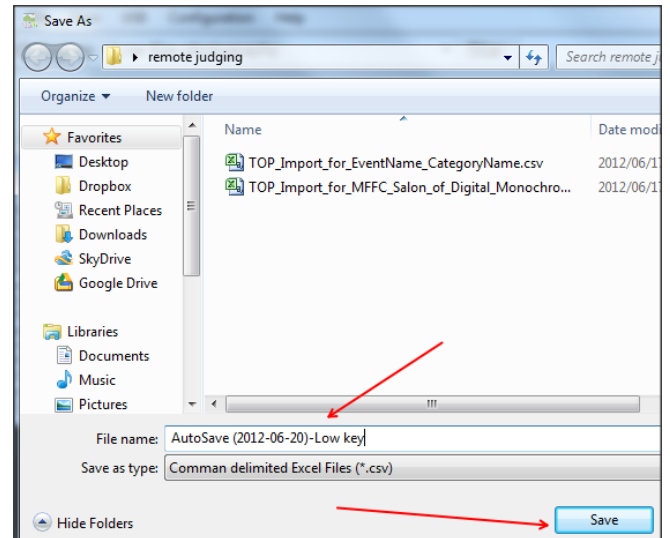


5. The last step before starting the judging session is to set up an auto save file. This



is to make sure that all scores are automatically saved while busy judging. From the “File” menu, select the “Auto Save” menu option and browse to a folder where you would like this file to be created. Type a name for the auto save file. I normally create this file in the same folder

as the original import file and name it using the word “Autosave”, the date and the name of the category. Click on the “Save” button. For a visual confirmation that you’ve successfully created the auto save file, look at the status bar at the bottom of the application.



Selected Photo Path: C:\Users\johann\Desktop\Low key | Auto Save File: C:\Users\johann\Desktop\remote judging\AutoSave (2012-06-20)-Low key.csv

6. You are now ready to start your judging session.

## The Test Images

The TOP Software contains an option to view the PSSA test images to confirm your calibration.

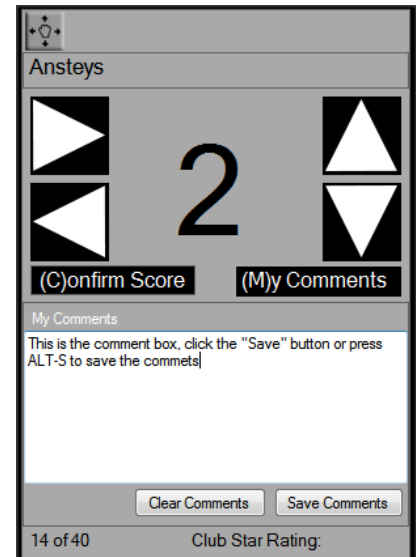
Select “Display Test Images” from the “View” menu. Use the left and right keyboard arrows to move through the test images and press the Escape key to hide the test images.

## The Judging Session

- Select “Display Photos” from the “View” menu to display the photos.
- Press the “S” key to score a photo.
- Use the “Up” and “Down” arrow keys to select your score and press “C” to confirm your score. Use the “Right” arrow key to move to the next photo.
- Press the “ESCAPE” key to close the full screen viewer.
- If you want to look at how you scored – and even rescore certain photos – you can use the Filter facility to see your distribution and select certain photos.

When doing remote judging for clubs, it is often required to comment on the photos. Use the “My Comments” feature on the JCU to add comments to the photo.

**Note** that you may ask the club for a TOP configuration file in order to see the club star gradings and the associated awards during such a remote judging session.



## Summary of keyboard functions in full screen mode

The full screen viewer has a view special keys available for use during a viewing session.

### R-Key

“R” stands for “Relocate”. Sometimes it happens that the PC graphics card does not expose the available screen enumeration list, and then the full screen display will appear on top of the admin screen. Pressing the “R” key, will put the full screen window in windowed mode. Drag it onto the correct screen and press the “R” key again to go back to full screen mode.

### F-Key

Pressing the “F” key during a full screen display session, will flip the photo vertically.

### H-key

The “H” key will display a luminosity histogram for the photo. This could be handy when commenting on photos for a remote club judging session.

### T-Key

“T” stands for “roTate”. Pressing the “T” key will rotate the screen by 90°. Every consecutive press of “T” will roTate it another 90°. This is handy when a photo was prepared with auto rotate on resulting in the photo being displayed on its side.

### I-key

“I” stands for Information. Pressing the “I” key will display a list of EXIF information (if available). Note that no author identifying information is displayed.

The following special keys are only available when “Keyboard Input” is selected in the General Setup.

## S-Key

Pup up the virtual Judging Control Unit. Use the Up and Down arrows to select the score.

## M-Key

When the virtual Judging Control Unit is visible, will open a “My Comments” box to type comments for the current photo.

## ALT-S Key

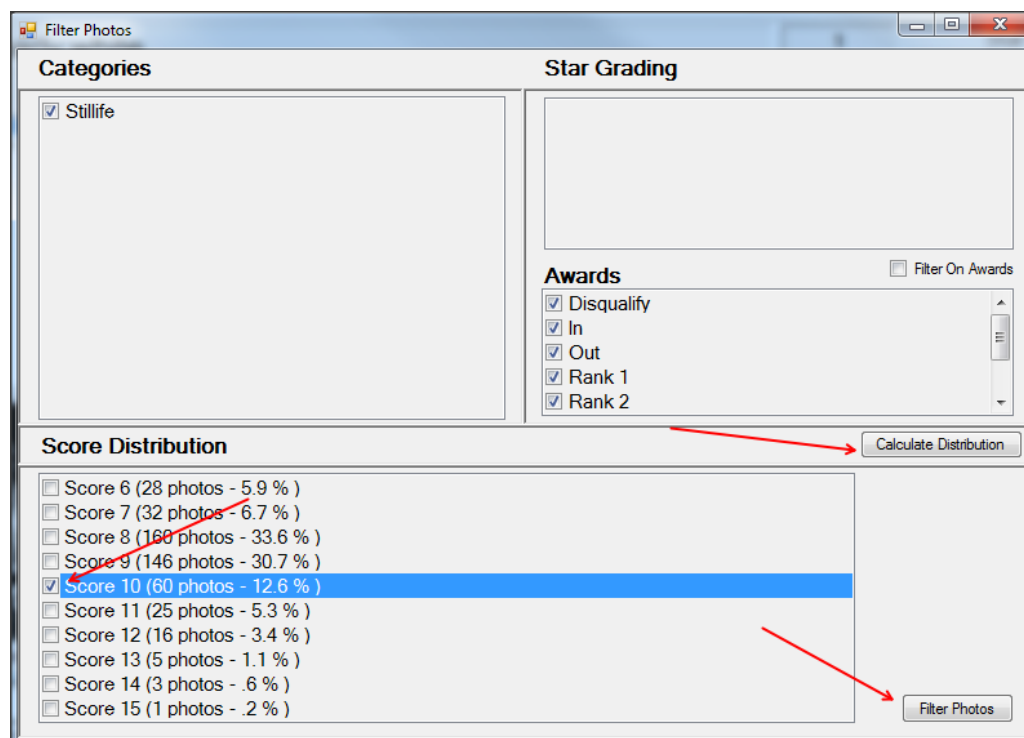
When done typing comments, press ALT-S will close the comments box.

## C-Key

“C” stands for “Confirm”. Pressing the “C” key while the virtual JCU is visible will save the score and close the virtual JCU.

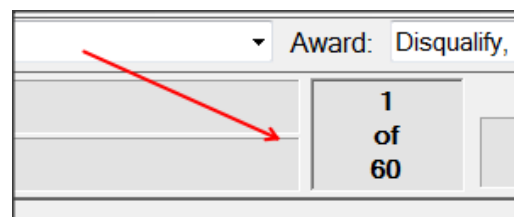
## Filter Photos

To see your score distribution, select “Filter Photos” from the View Menu. Click on the “Calculate Distribution” button to see the distribution.



To relook at all the photos you scored 10 points (in this case it was 60 photos), select the group using the check box next to the “Score 10” and click on “Filter Photos”. **Note** that your list of photos will now only contain the 60 photos that received a score of 10.

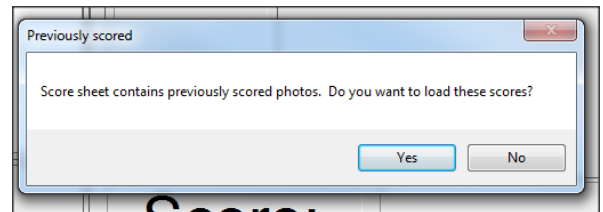
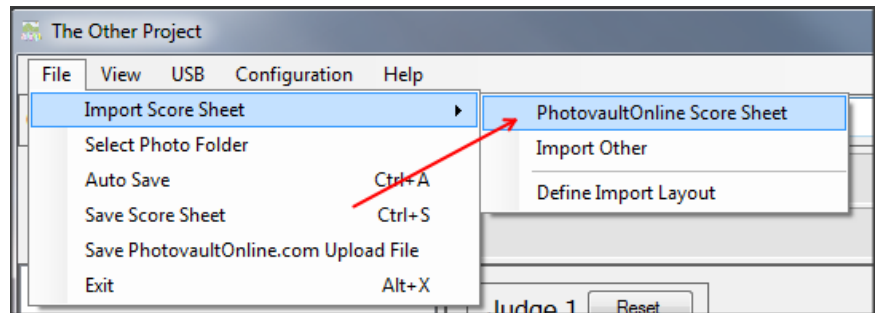
Back in the main screen; display the photos as described previously.



At the end of a session you must save your scores using the “Save Score Sheet” from the “File” menu. (The auto save file will also be saved and is your backup.)

## Judge over Multiple Sessions

Whenever you save your score sheet, it saves it in the normal *PhotovaultOnline Master Score sheet* format. So, if you want to do your judging over multiple sessions, at the start of the next session, you will need to import your scores of the previous session. As the score sheet is saved in that standard *PhotovaultOnline Master Score sheet* format, select “PhotovaultOnline Score Sheet” from the Import Score Sheet submenu. When prompted to import previous scores, select “Yes”.



Once finished with your remote judging, email the saved score sheet as an attachment to the Salon Director (or follow any other instructions as supplied by the Salon Director).